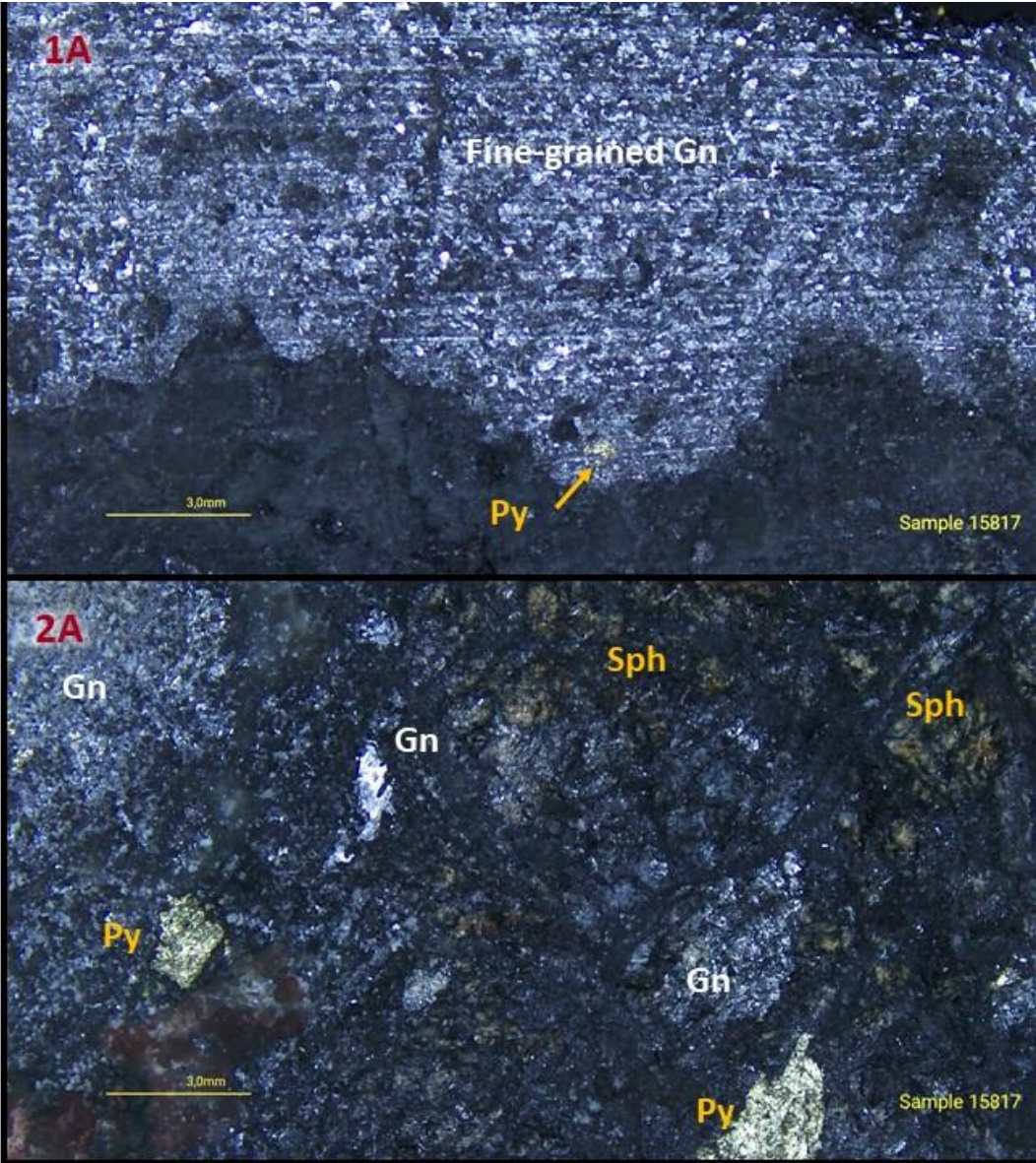




Hydrothermal Breccia: fine grained galena with late replacing galena, sphalerite and argentite, with chalcopyrite possibly containing high grade Au.

Length (m)	Au (ppm)	Ag (ppm)	Cu (%)	Pb (%)	Zn (%)
0.75	31.7	1,104	0.5	26.4	14.1

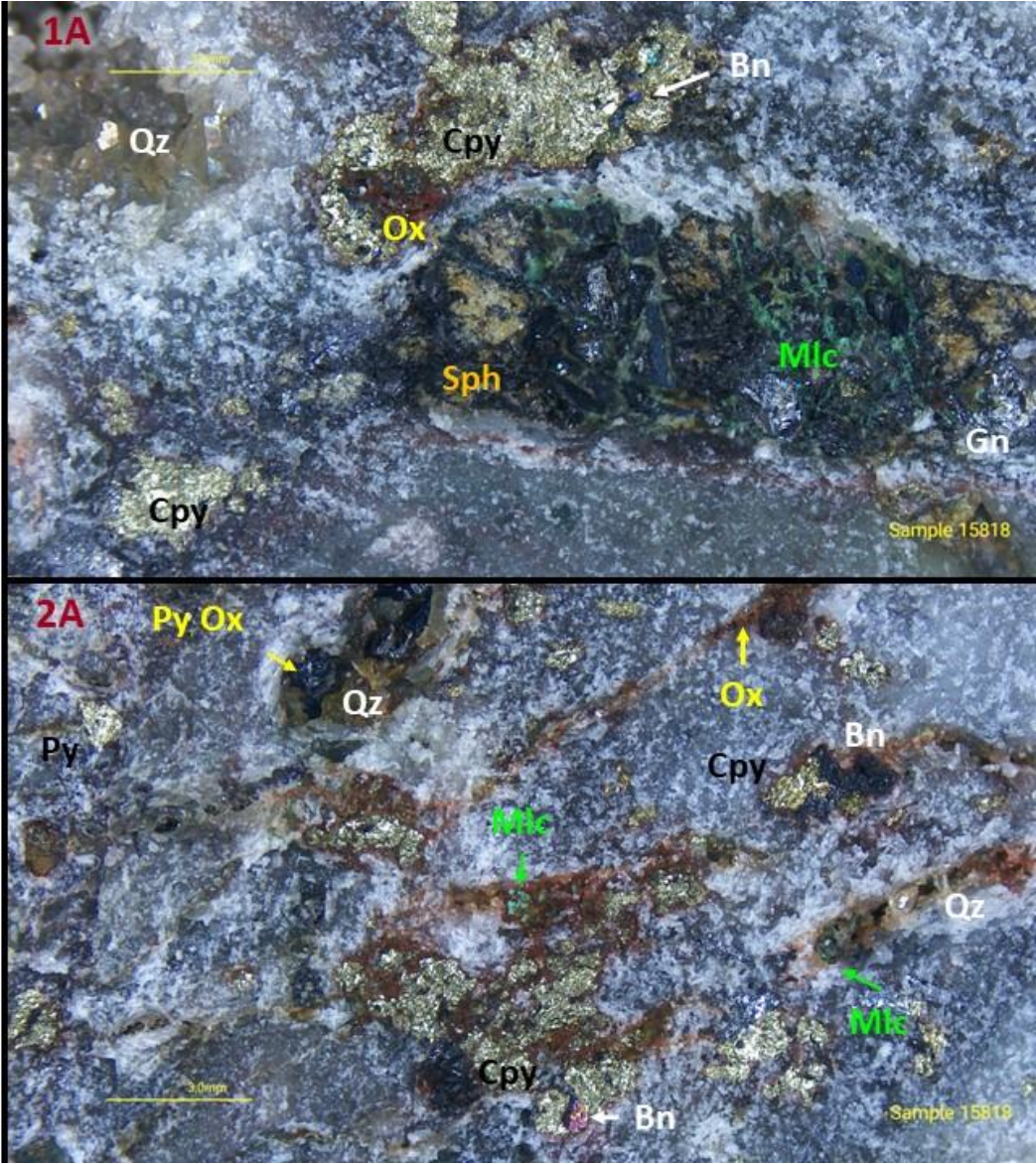


1 Note : The samples presented in this catalogue represent selective samples collected from underground channel sampling carried out by GR Silver Mining Ltd. at level 775 – Historic Plomosas Mine.



Hydrothermal / Crackle Breccia: Quartz veining controlling emplacement of massive sulphides composed of galena, sphalerite, acanthite/argentite, chalcopyrite, bornite and pyrite, with supergene oxidation of Cu sulphides like malachite and covellite

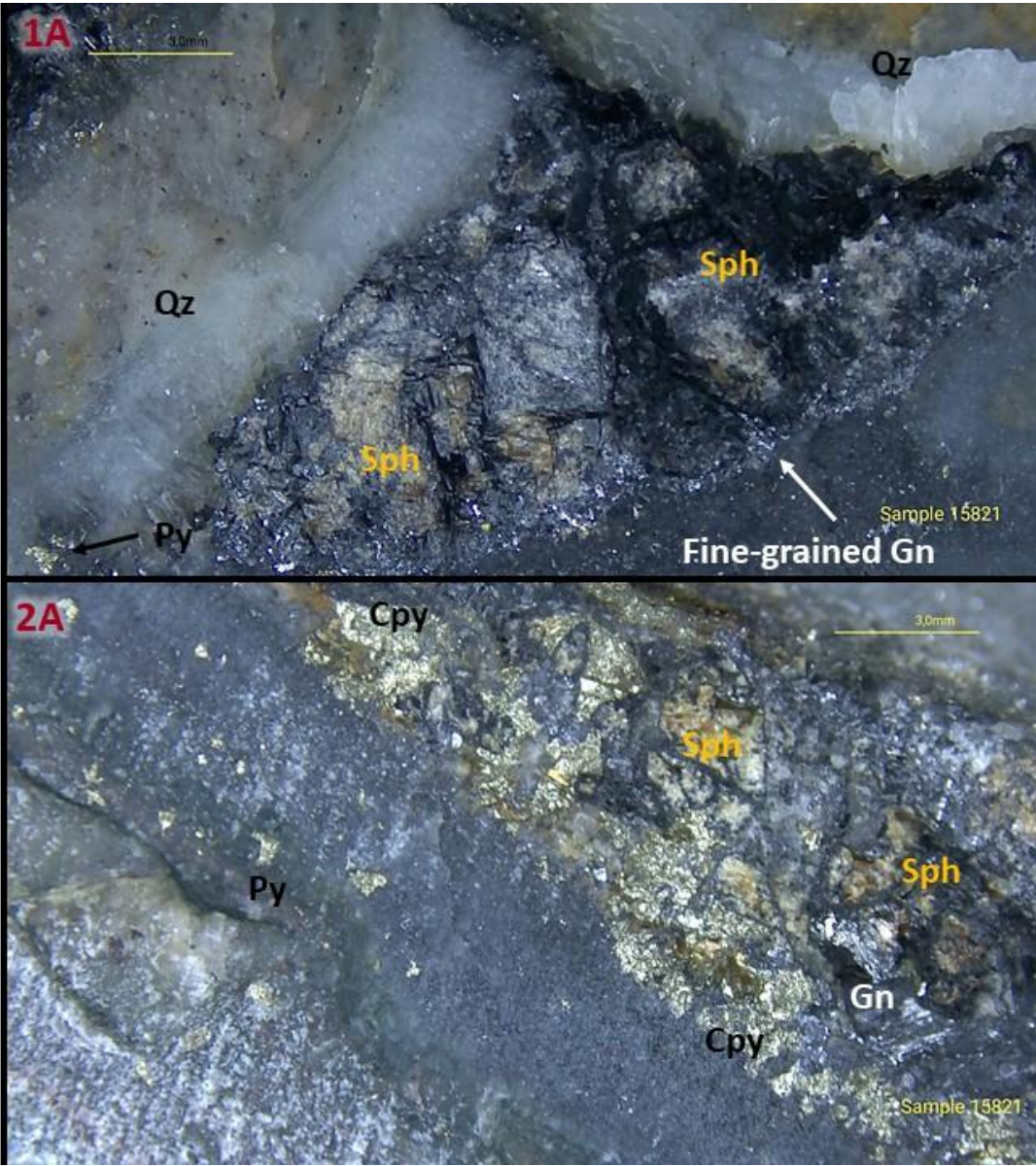
Length (m)	Au (ppm)	Ag (ppm)	Cu (%)	Pb (%)	Zn (%)
1.25	2.44	623	0.1	0.3	0.8





Hydrothermal Breccia: Quartz and silicification alteration with massive and disseminated sulphides composed of galena, sphalerite, acanthite and high grade Au

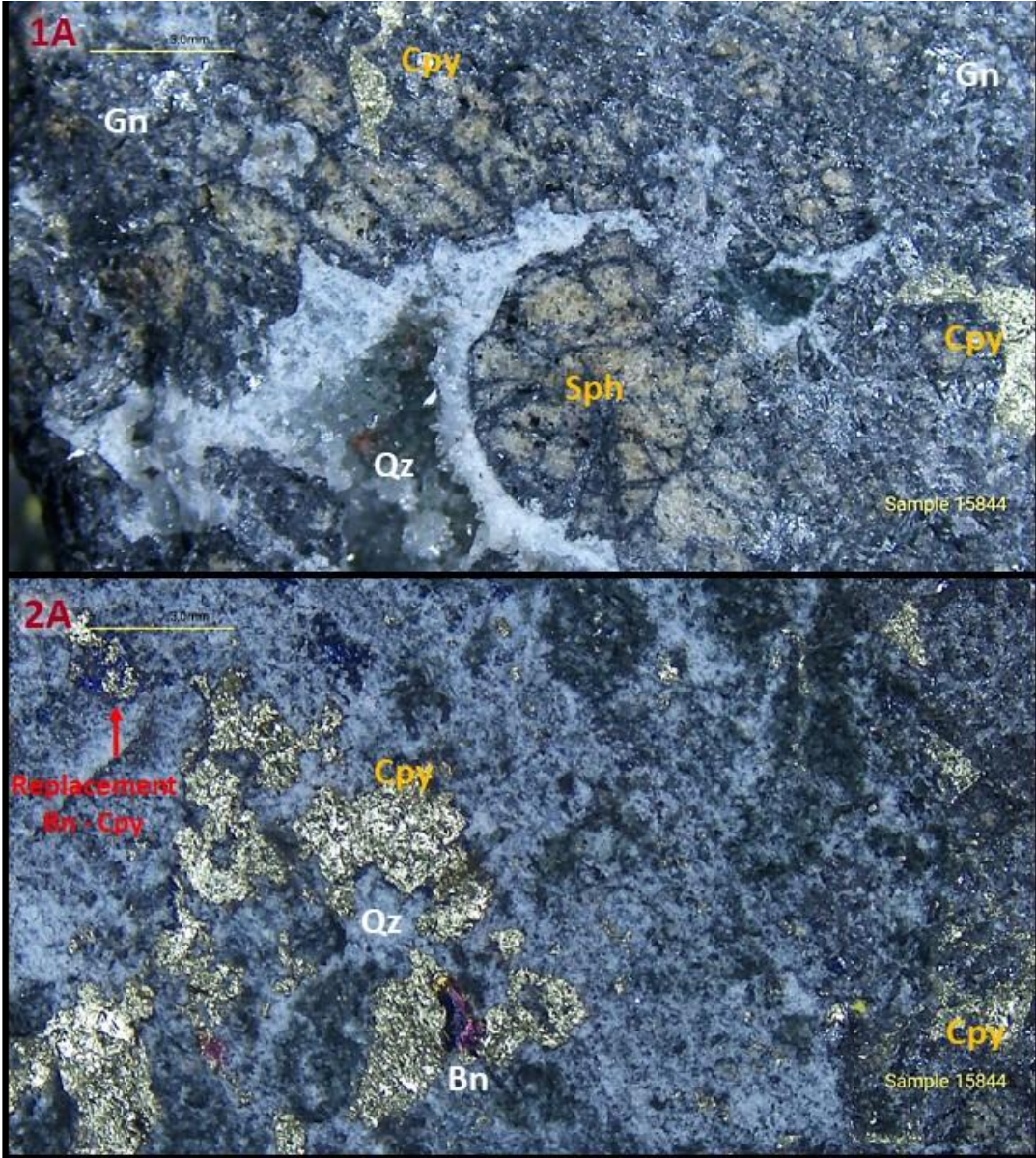
Length (m)	Au (ppm)	Ag (ppm)	Cu (%)	Pb (%)	Zn (%)
2.00	18.9	395	0.6	1.9	11.4





Hydrothermal Breccia: Quartz and massive sulphides cementing silicified wallrock fragments. Sulphides composed of galena, sphalerite, pyrite and late replacing chalcopyrite possibly containing high grade Au

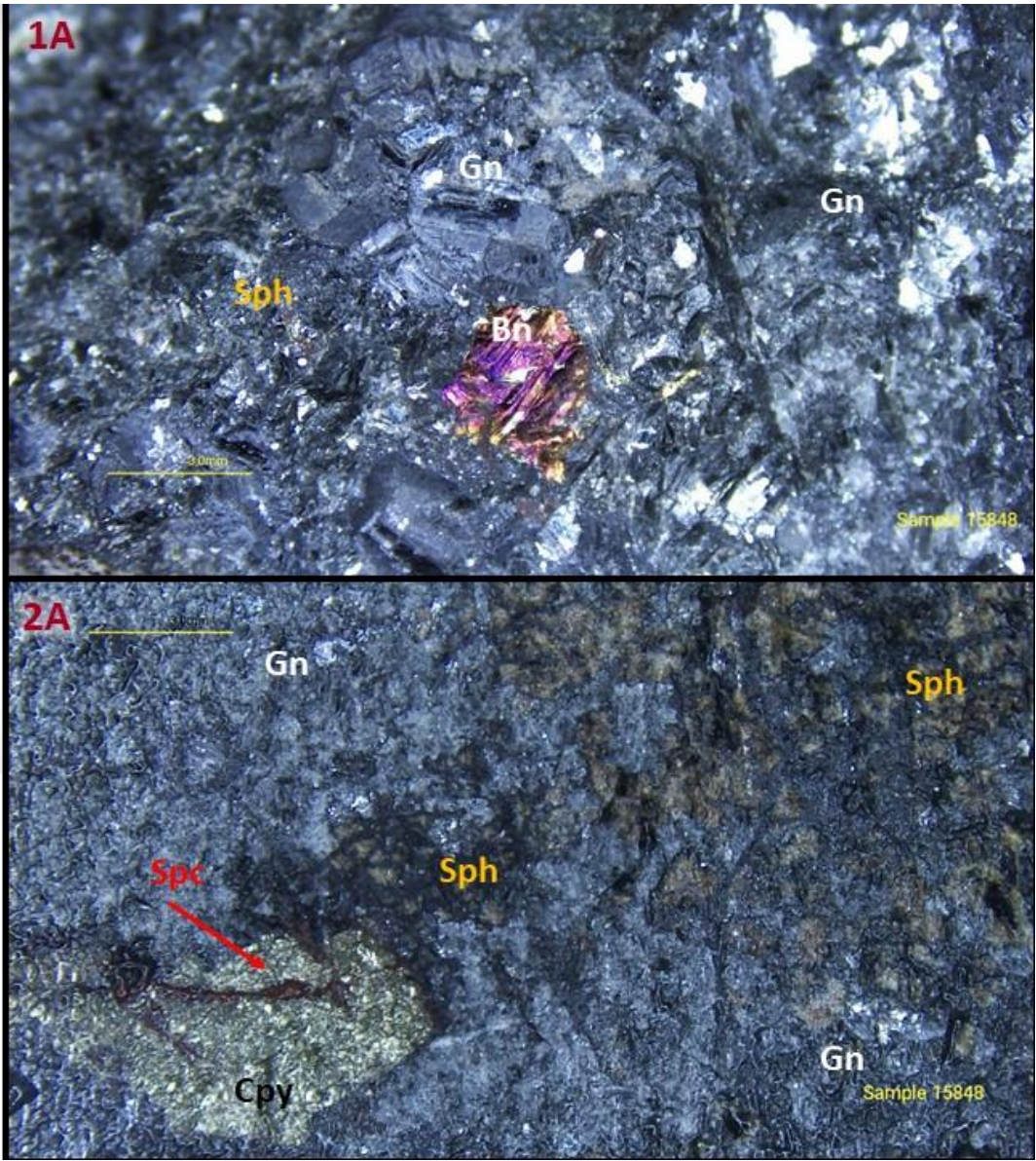
Length (m)	Au (ppm)	Ag (ppm)	Cu (%)	Pb (%)	Zn (%)
1.00	37.5	287	1.1	0.5	1.1





Hydrothermal Breccia: Gray silica replacement and massive sulphides matrix composed of galena, sphalerite, chalcopyrite (+/- specularite), and bornite with high grade Au

Length (m)	Au (ppm)	Ag (ppm)	Cu (%)	Pb (%)	Zn (%)
1.00	10.4	136	0.4	8.0	14.6



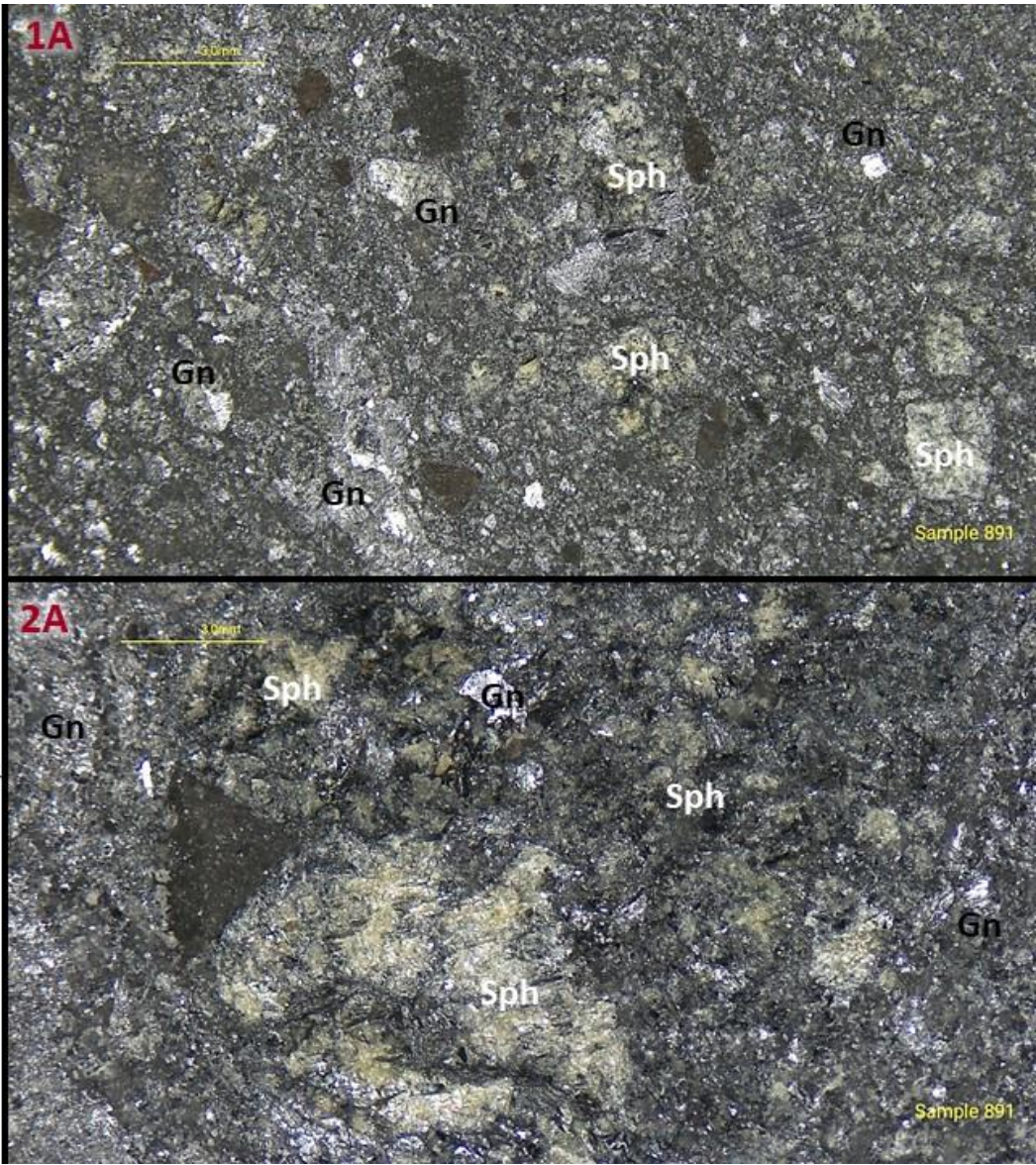


Plomosas Breccia

Sample ID 891

Hydrothermal Breccia: Selective sample of typical Plomosas Breccia containing fine grained massive galena with late replacing event of coarse galena and sphalerite with anomalous Ag-Au

Length (m)	Au (ppm)	Ag (ppm)	Cu (%)	Pb (%)	Zn (%)
XRF	4	59	0.02	7.33	12.32



GR Silver Mining Ltd.

999 West Hastings St., 9th Floor,
Vancouver, BC, V6C 2W2

General Inquiries: +1-604-202-3155

Investor Relations: +1-604-558-6248

info@grsilvermining.com

grsilvermining.com



@GRSilverMining



GR Silver Mining



GR Silver Mining Ltd.