

## HIGH-GRADE CORE SAMPLE

### PLS21-18 Surface Plomosas

Drill hole: PLS21-18

Sample: 32565

From: 191.00

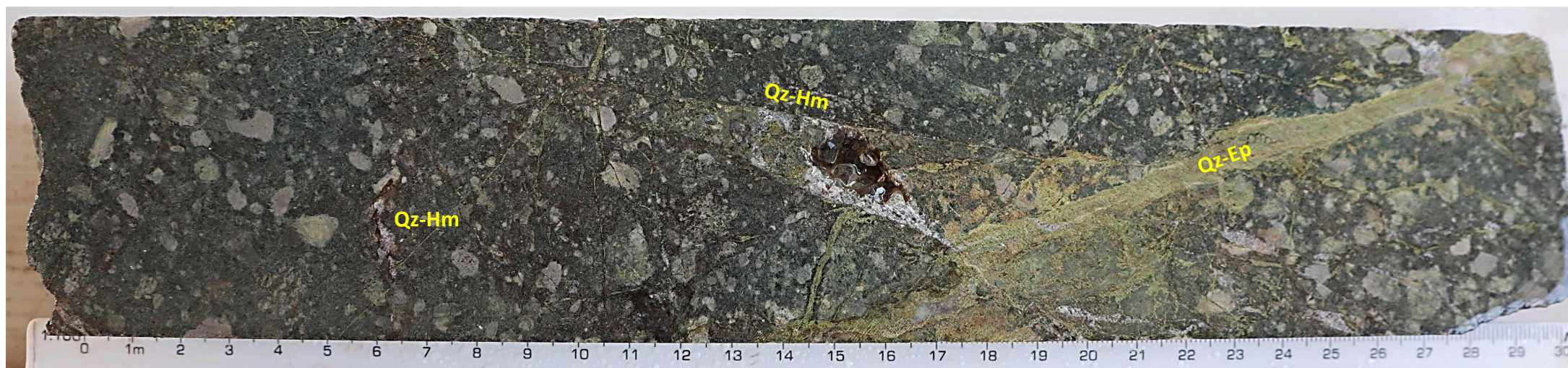
To: 192.00

Description: **Epithermal Quartz veins** with comb texture and hematite halo, cutting quartz-epidote veins

Host rock: Andesite lapilli tuff

Mineralization: Specular hematite (Hm), quartz (Qz)

Alteration: Hematite, Chlorite, Epidote (Ep)



| Ag g/t | Au g/t | Pb % | Zn % | Cu % |
|--------|--------|------|------|------|
| 1      | 11.74  | 0.0  | 0.0  | 0.0  |



## HIGH-GRADE CORE SAMPLE

### PLS21-17 Surface Plomosas

Drill hole: PLS21-17

Sample: 32680

From: 92.55

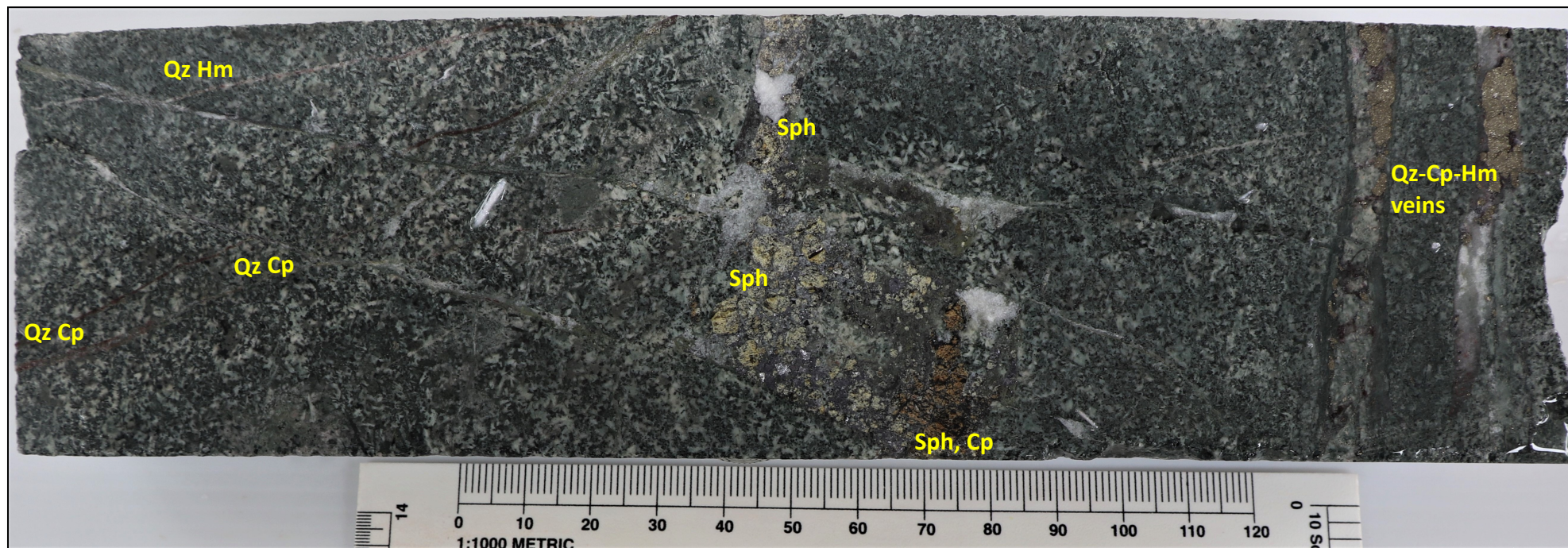
To: 93.00

Description: Epithermal Quartz-Sulfide-Hematite vein

Host rock: Diorite intrusive

Mineralization: Sphalerite (Sph), chalcopyrite (Cp), pyrite (Py), hematite (Hm)

Alteration: Chlorite, Epidote



| Ag g/t | Au g/t | Pb % | Zn % | Cu % |
|--------|--------|------|------|------|
| 3      | 13.05  | 0.5  | 1.0  | 0.0  |